

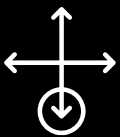
WELCOME TO FISHHUNTER™ 3D



**THE MOST POWERFUL,
PORTABLE FISH FINDER**

5 Transducer, tri-frequency,
portable wireless fish finder
that hunts fish up to 160ft (50m)
and can be cast or trolled.

FISH HUNTER™



**DIRECTIONAL
CASTING**



**3D STRUCTURE
MAPPING**



**5 TRI-FREQUENCY
TRANSDUCERS**



**BATHYMETRIC
MAPPING**



**We strive to improve our product each month and
this means this manual is already outdated.**

**Please go online and download
the most recent version of our manual:**

www.fishhunter.com/support

OVERVIEW

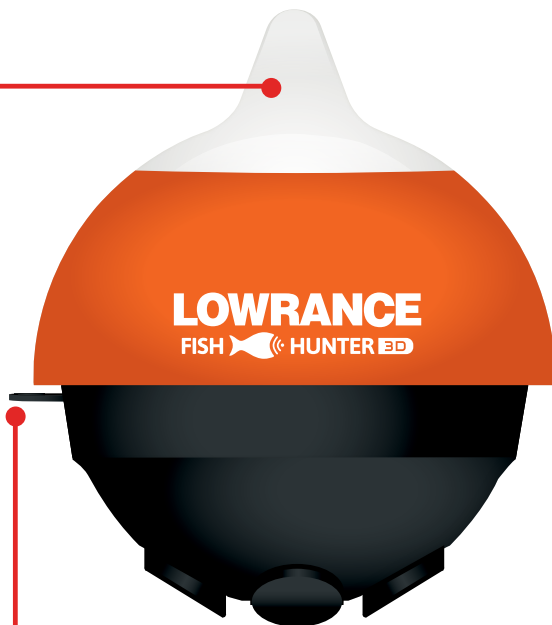
FishHunter™ 3D is the most powerful finder ever created for Apple and Android phones and tablets. The sonar floats on the surface of the water where it tracks water temperature, water depth, bottom contour and fish locations. It can be both cast and trolled behind your boat or placed in your ice hole.

The **FishHunter™ 3D** wireless fish finder sonar connects to your smartphone/tablet via Wi-Fi using our free software app, so you don't need to have a cell tower connection or use your cellular data to use your new fish finder.

Using our free **FishHunter™** software app, you will also have the ability to access and store critical fishing information like your favorite fishing spots, your catch details and share your information with your friends and other anglers.

FISHHUNTER™ 3D

Night-time Fish Attraction Illumination



Towing Point

FRONT VIEW

5 Tri- Frequency Transducers (381KHz, 475 KHz, 695 KHz)



USB Charging Port

BOTTOM VIEW

HOW TO BEST USE YOUR FISHHUNTER



STEP 1: Create a **BATHYMETRIC MAP** of the area

Using **BATHYMETRIC MAPPING** troll around your favorite fishing spot to create a contour map so you can find the changes in bottom depth



STEP 2: Check the bottom structure using **3D STRUCTURE MAP**

Once you've identified where the depth changes are using your bathymetric maps, then navigate back to those spots using your FishHunter app and create a **3D STRUCTURE MAP** to see the bottom structure across those specific areas.



STEP 3 : Check the area for fish using **DIRECTIONAL CASTING** or **3D FISHING**

You know you are in the right spot, but are the fish here NOW? Cast or toss your FishHunter sonar into the water and turn on **Directional**



Casting and use the 5 Transducer view to see if fish are present OR power up **3D Fishing** to see our unique underwater view of 3 transducers simultaneously.



STEP 4 : Create a fishing "spot" for this location in the **MAP** area of your app

Enter the MAP area of the FishHunter app and record a "fishing spot" by creating a pin that can identify this area with GPS co-ordinates so you can find it easily next time.



STEP 5 : **Log your Catch**

Record your catches in your catch log book so you can find the exact bait and location information again in the future.

HOW TO CHARGE

Charging your **FishHunter** can be done in 4 easy steps:

Step 1: Take the USB charge cord from the box and hold the end that has 3 pins holes in it.

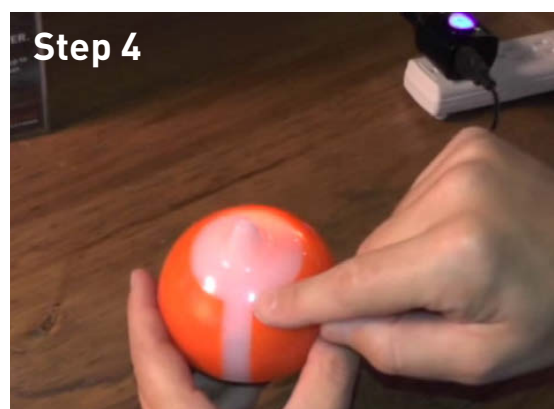
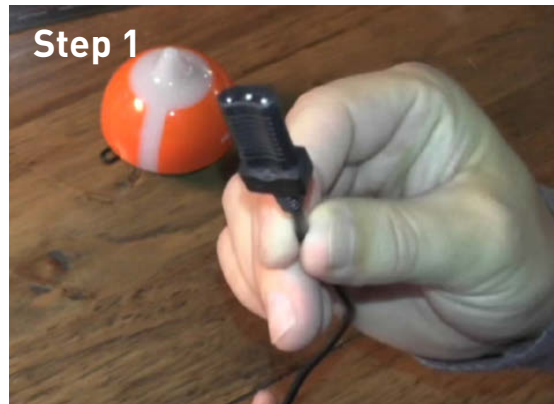
Step 2: Locate the 3 pin charging port on the bottom of the sonar. It is on the opposite side from the tow point at the back of the sonar.

Step 3: Push the USB cord into the bottom of the sonar so that it is in snugly. You will notice that you **MUST** slide the charge cord past the transducer on the bottom of the sonar which makes it slightly difficult to get the charge cord into the side of the unit. This is the correct way to ensure a good connection with your sonar.

Step 4: Plug the USB cord into USB charger. A red light will appear on the top of the sonar and stay on until fully charged.

Please see the charging video at:

www.fishhunter.com/support



A fisherman in a small boat on a misty lake at sunrise, casting a fishing rod. The scene is bathed in a warm, golden light, with the sun low on the horizon, creating a soft glow over the water and the surrounding trees. The fisherman is silhouetted against the light, and his fishing rod is extended across the frame. The water is calm, reflecting the light and the fisherman's figure. The overall mood is serene and peaceful.

KNOW WHERE TO CAST™

95% OF THE FISH
ARE IN 5% OF THE WATER

HOW TO CONNECT

- 1 Download the **FishHunter App** from the Google store or iOS app store.
- 2 Create an account by opening the app and following the steps on the screen. Please be sure to do this before you leave your coverage area.
- 3 Ensure you have charged your **FishHunter** for minimum of 4 hours before first usage.
- 4 Attach your **FishHunter** to the braided line on the end of your fishing line or tether it to the red leash that was provided in your box by threading the red leash through the tow point on the front of your **FishHunter** OR by attaching the fishing hook onto the front of your sonar and the end of the red leash provided.
- 5 Drop the **FishHunter™** into the water.
- 6 The sonar will automatically turn on when placed in water and will begin slowly flashing red from the top of the sonar. If you don't see any lights then the FishHunter is not charged.
- 7 Open your Wi-Fi settings on your smartphone or tablet. Refresh the list and select "**FishHunter Wi-Fi XXX**".
[Note: It may take up to 1 minute to appear]
- 8 Wait for your phone/tablet to tell you that you are connected to "**FishHunter Wi-Fi**". You will see a check mark on your Wi-Fi settings to show you are connected.

(Note: other phones or tablets can cause connection errors. Ensure their Wi-Fi settings are turned off.)

- 9 Once connected, open the **FishHunter App** and go to the “**Sonar**” section.
- 10 If you are connected to your FishHunter correctly, you will see the following options:

Directional Casting Bottom Mapping 3D Contour
Bathymetric Mapping Ice Fishing Flasher Switch Device

- 11 The slow red flashing light on your sonar will start flashing quickly when connected and sending information to your phone or tablet.

The unit will automatically power down and turn off when not in the water after a few minutes. If the lights remain on after it is removed from water, please ensure the charging pins are free from any water or debris by blowing on them. Additionally, you can insert and remove the charging cord and that should enable the sonar to power down after 60 seconds. If the unit still remains on, then double check that your wifi is turned off and repeat the above.

YOU CAN RESET YOUR SONAR AT ANY TIME BY INSERTING THE CHARGE CORD INTO THE BOTTOM OF THE UNIT AND REMOVING IT.

WI-FI CONNECTIVITY & FISHHUNTER

In order for you to get the best possible signal and connection with your FishHunter, we recommend that you follow the pictures below.

For the best connection, your smartphone/tablet should be looking down towards the sonar and should be elevated above the floating sonar.

For more information visit:

www.fishhunter.com/wifi-coverage

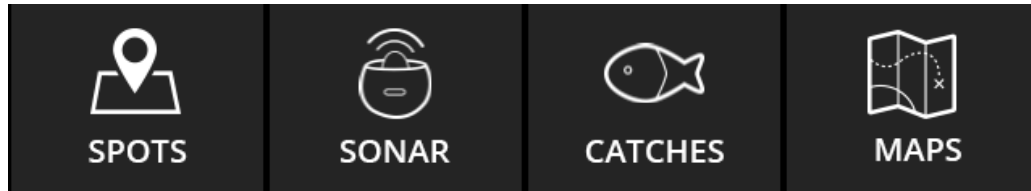


BEST PRACTICES

1. Line of Sight
2. Good Elevation
3. No Obstructions



FISHHUNTER APP - MAIN MENU



SPOTS

This is the area of the app where you can save and retrieve all your favorite fishing spots.

Use the “Filter” feature to explore the map for:

- Catches (species, length, bait used etc.)
- Pins (fishing spots, marinas, food etc.)
- Find other FishHunters in your area



SONAR

This is the area of the app where you will go to control and see the output from your sonar

Select the view or feature you want to use your sonar with

- 3D Fishing
- Directional Casting
- Bathymetric Map
- 3D Structure Map
- Ice Fishing



CATCHES

Here you can log all your catch information and see/explore other FishHunters recent catches too.

Steps to log a catch:

1. Select GPS location
2. Add catch details
3. Add photo
4. Share catch



MAPS

You can find all your saved Bathymetric and 3D Structure Maps here for review and analysis.

Click on a map pin to view its details or to navigate right back to the area where you made the map.

THE WORLD'S ONLY PORTABLE FISH FINDER WITH 72° COVERAGE



72°

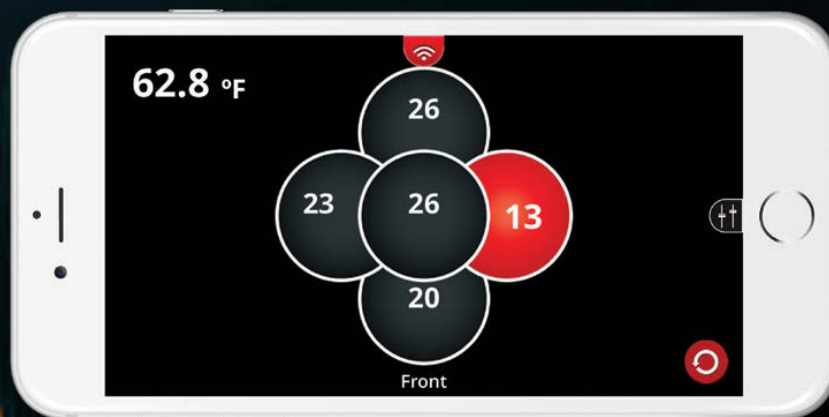
OF COVERAGE ANGLE



FishHunter 3D is the **ONLY** portable fish finder that has the power to give you **72 degrees** of coverage of the bottom contour with incredible resolution. Within seconds you gain access to detailed information about your favourite spots or current location to help you catch more fish. Take advantage of this coverage in **DIRECTIONAL CASTING** and **3D FISHING**.



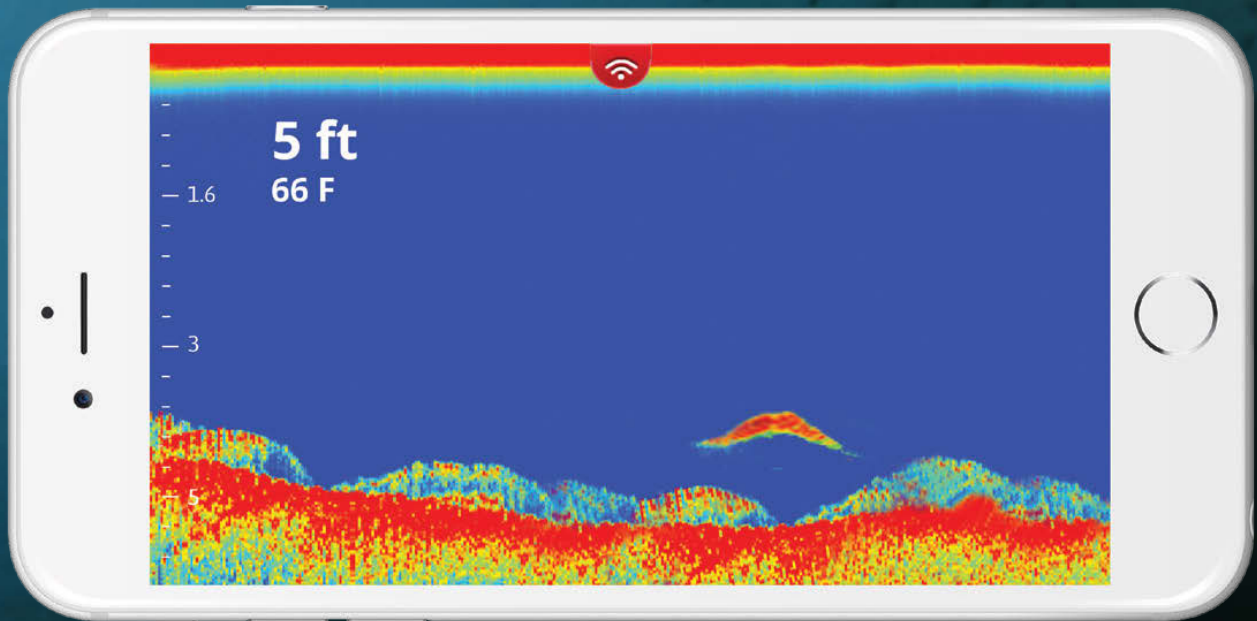
3D FISHING



DIRECTIONAL CASTING

SHALLOW WATER MODE

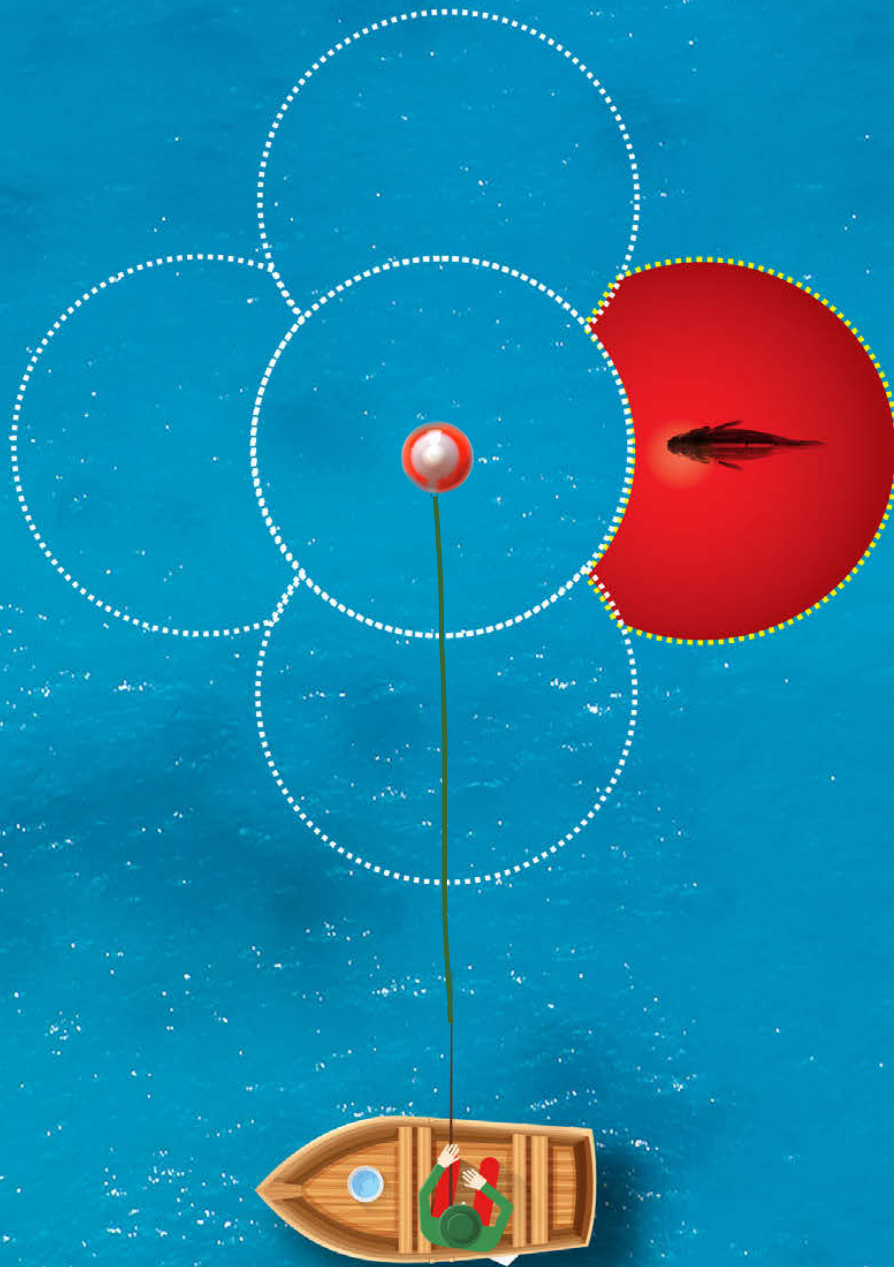
FishHunter is the only wireless portable fish finder that comes with a shallow water mode that allows you to get into water that is only 1.4ft (0.4m) deep. This mode uses our patent pending tri-frequency technology to allow for the ideal balance of power and resolution to give you detailed information about the bottom terrain and ability to locate the weeds, rocks and drop offs easily.



SHALLOW WATER STEPS

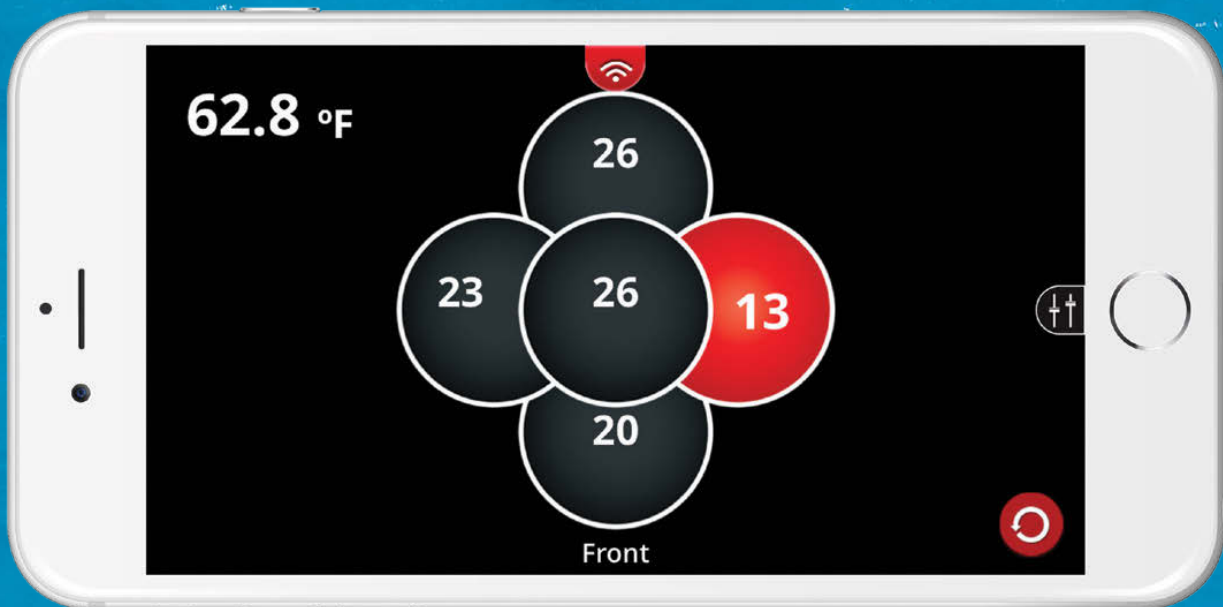
- 1 Place your **FishHunter** in water for it to turn on.
- 2 The sonar will have a red light appear and an additional slow flashing red light to identify that it is on.
- 3 On your Smartphone/Tablet open your Wi-Fi settings. Refresh the list and select "FishHunter Wi-Fi XXX"
(Note: this can take up to 1 minute)
- 4 Open the FishHunter app on your smartphone or tablet and go into the sonar section.
- 5 Select your preferred view.
- 6 Pull out your side menu.
- 7 On the range settings, select **Shallow Water**.
(**Note**: you **must** adjust the **power slider** to ensure you have the right amount of power for your area. Failure to adjust power can cause your FishHunter not to find the bottom correctly.)
- 8 You can pull down the top menu to select raw or fish view, select the units of measurement, drop a pin or take a screenshot.

DIRECTIONAL CASTING™



Directional Casting™ powers up all 5 Tri-Frequency transducers, showing you the depth of the water and where the fish are being detected in relation to your floating FishHunter.

In this example, the right transducer is red, and the number 13 appears. This indicates fish are on the right side of your FishHunter, at a depth of 13 feet. Now cast in that direction and increase your chances of catching fish. Click on any of the 5 round icons and you get a split view screen with the left side showing the depth of any fish detected and the right side showing you the exact bottom contour for the transducer you selected.

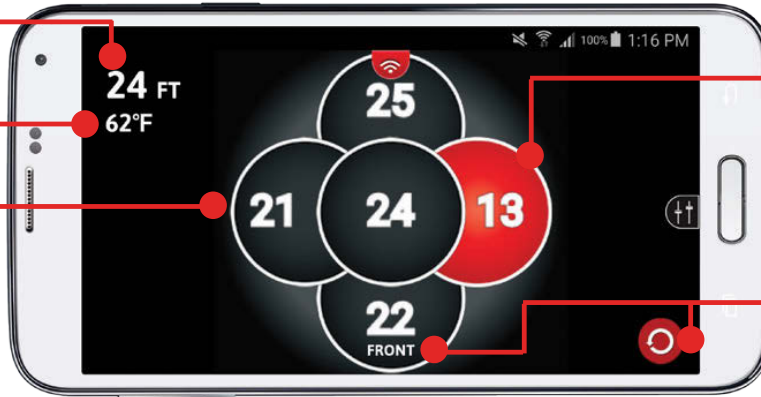


DIRECTIONAL CASTING™

Depth to the bottom

Water temperature

Each circle is one transducer

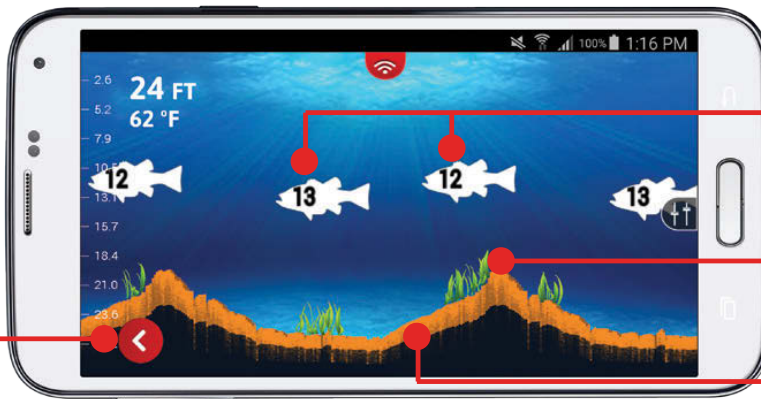


Red circle indicates fish under that transducer and its depth (13ft)

Front transducer can be changed by pressing the rotating circle

5 Transducer View

Go back to "5 Transducer View"



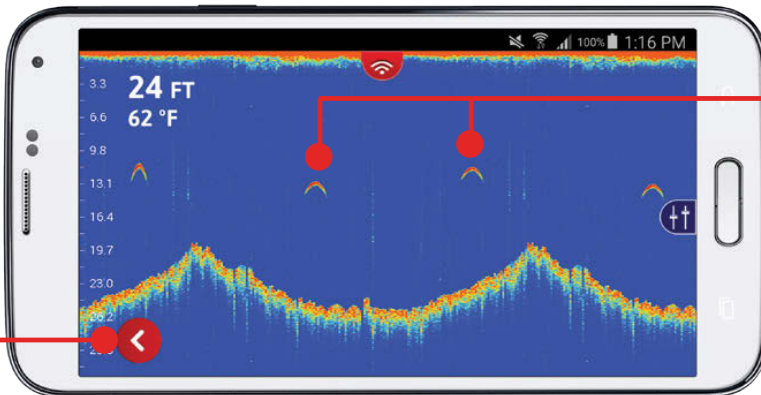
Fish detected with depth

Weeds

Bottom contour

FISH VIEW

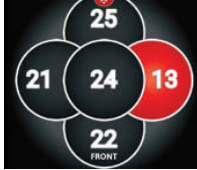



Go back to "5 Transducer View"



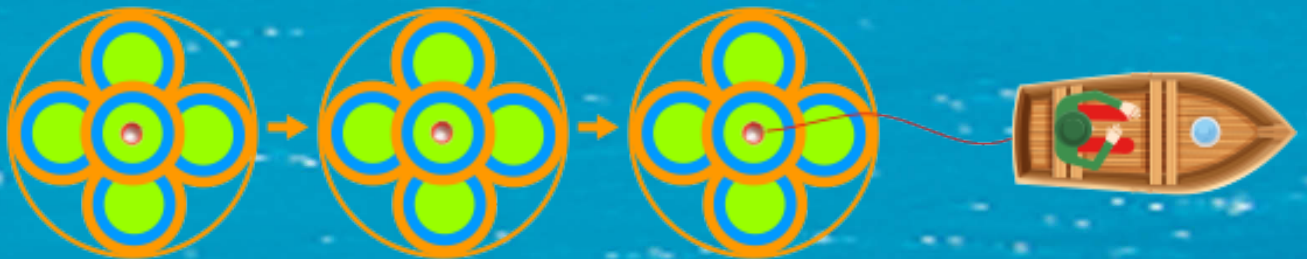
Fish detected

RAW VIEW

DIRECTIONAL CASTING STEPS

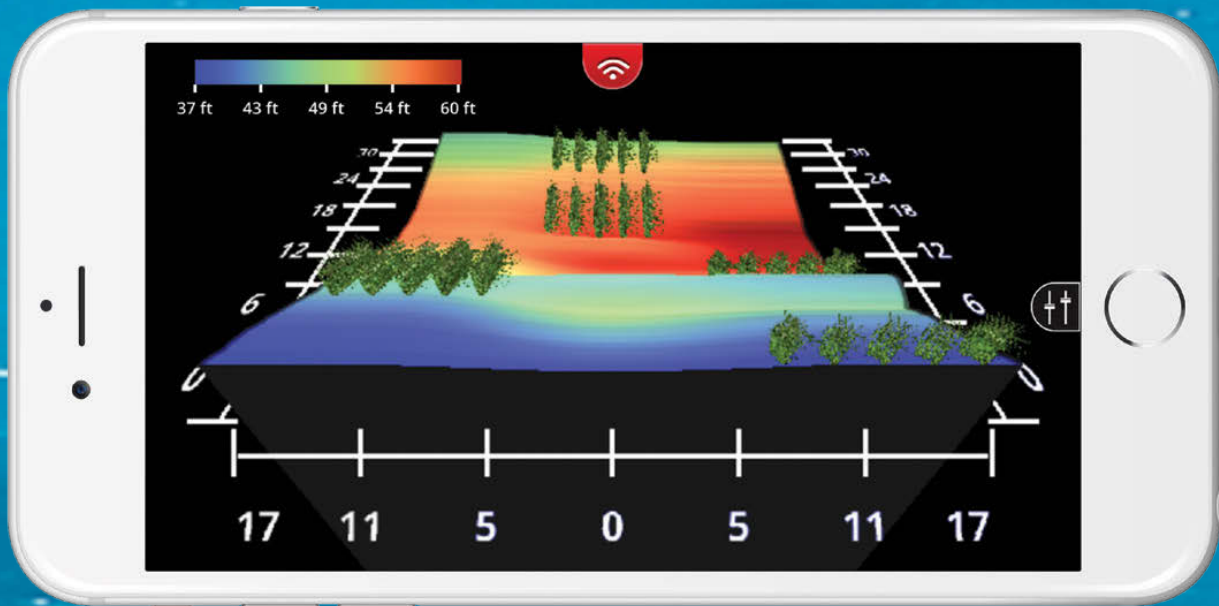
- 1 Place **FishHunter** in water for it to turn on.
- 2 Open your Wi-Fi settings and select **FishHunter Wi-Fi XXX**
- 3 Open the FishHunter app and go into the sonar section
- 4 Select **DIRECTIONAL CASTING**
- 5 Set range to the depth you are fishing in and click the arrow
- 6 Now in "**5 Transducer View**" with each circle representing one of five transducers on the bottom of your sonar.
- 7 If one of the circles is red, it means fish have been detected below that transducer with their depth.
- 8 You can select any transducer on the screen to get the bottom contour by pressing on the circle.
- 9 You can view a split screen of the bottom countour and 5 transducers by clicking on the arrow.  Click the arrow again to return to "5 transducer view"
- 10 Cast your line towards the area of the sonar that keeps lighting up red on your screen to catch more fish.
- 11 To adjust where the front of your sonar is facing simply select the rotation button on the screen. 
- 12 You can switch between "**Raw View**" and "**Fish View**" from top menu. 

3D STRUCTURE MAPPING



REEL, DRIFT, or TROLL

You can create custom **3D Structure Maps** of your favorite fishing spots by placing the **FishHunter** in the water and then reeling/drifted/trolling it over the area you want to measure. Use the color coded scale to easily see drop offs or toggle on/off the grid overlay to know exactly where the drop offs are, their relative depth and distance. Every map has a GPS tag so you can save the map and fish in the same spot next time- no problem.



3D STRUCTURE MAPPING

FRONT VIEW

- Color depth scale
- Distance away from you
- Distance across

LEFT SIDE VIEW

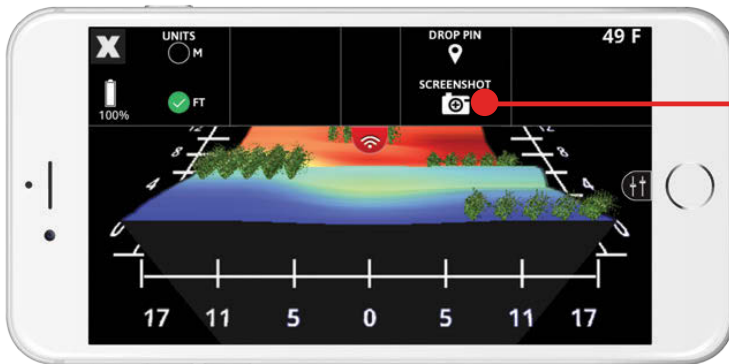
- Side view bottom map (single color)
- Side menu

SIDE MENU

- Top Menu
- Turn on/off each Distance Grid and Depth Grid
- Color option of the map
- Tilt option either Medium or Full
- View orientation Front or Left Side

3D STRUCTURE MAPPING STEPS

- 1 Place **FishHunter** in water for it to turn on.
(Note: it must be in 4ft of water or more to work correctly.)
- 2 Open your Wi-Fi settings and select "**FishHunter Wi-Fi XXX**"
- 3 Open the FishHunter app and go into the sonar section.
- 4 Select the **FishHunter** sonar icon.
- 5 Select "**START FISHING**".
- 6 Select the "**3D Structure Mapping**" icon within the FishHunter™ app from your phone/ tablet screen.
- 7 Cast/drop **FishHunter** into the water in the area you would like to map.
- 8 Follow the steps to create and save a **Map**.



You can screenshot your maps from the top menu.

TOP MENU

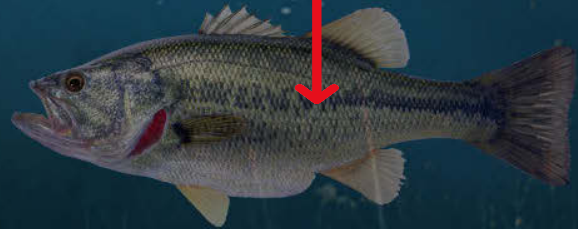
Note: All 3D Structure Maps are auto-saved and can be found in Maps section on main sonar screen.

3D FISHING

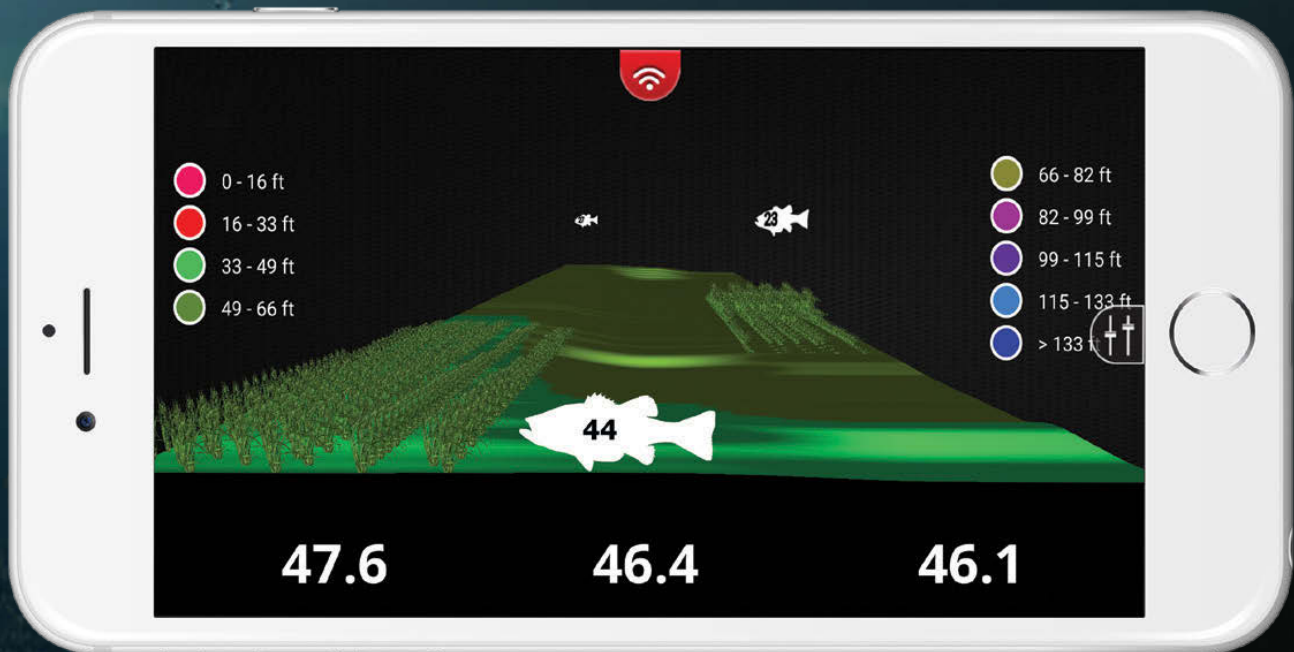


DEPTH TO
BOTTOM
47.6 ft

DEPTH TO
FISH
44 ft

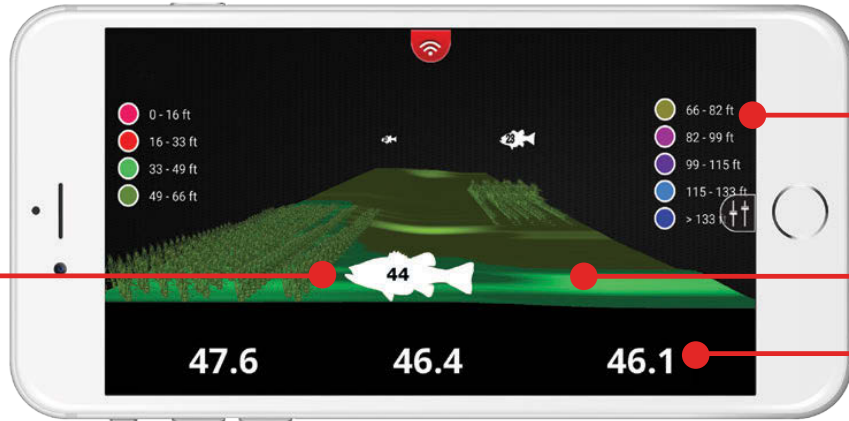


Used to determine bottom contour when in a stationary position on the surface of the water. 3D software and 5 Tri-Frequency transducers allows us to create “life like” images of the bottom, so you can quickly evaluate bottom contour. Knowing the bottom contour when fishing is critical to improve your catch rate and our cutting edge 3D technology provides a detailed view of any underwater terrain.



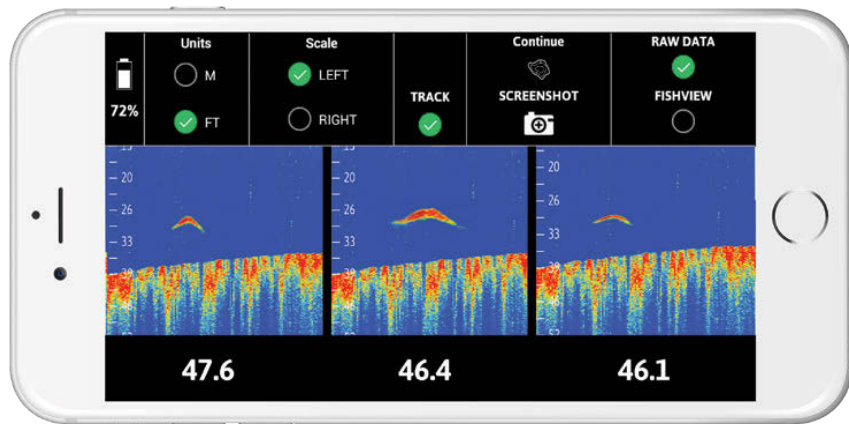
3D FISHING

Bottom depth shown by different colors



Fish with depth

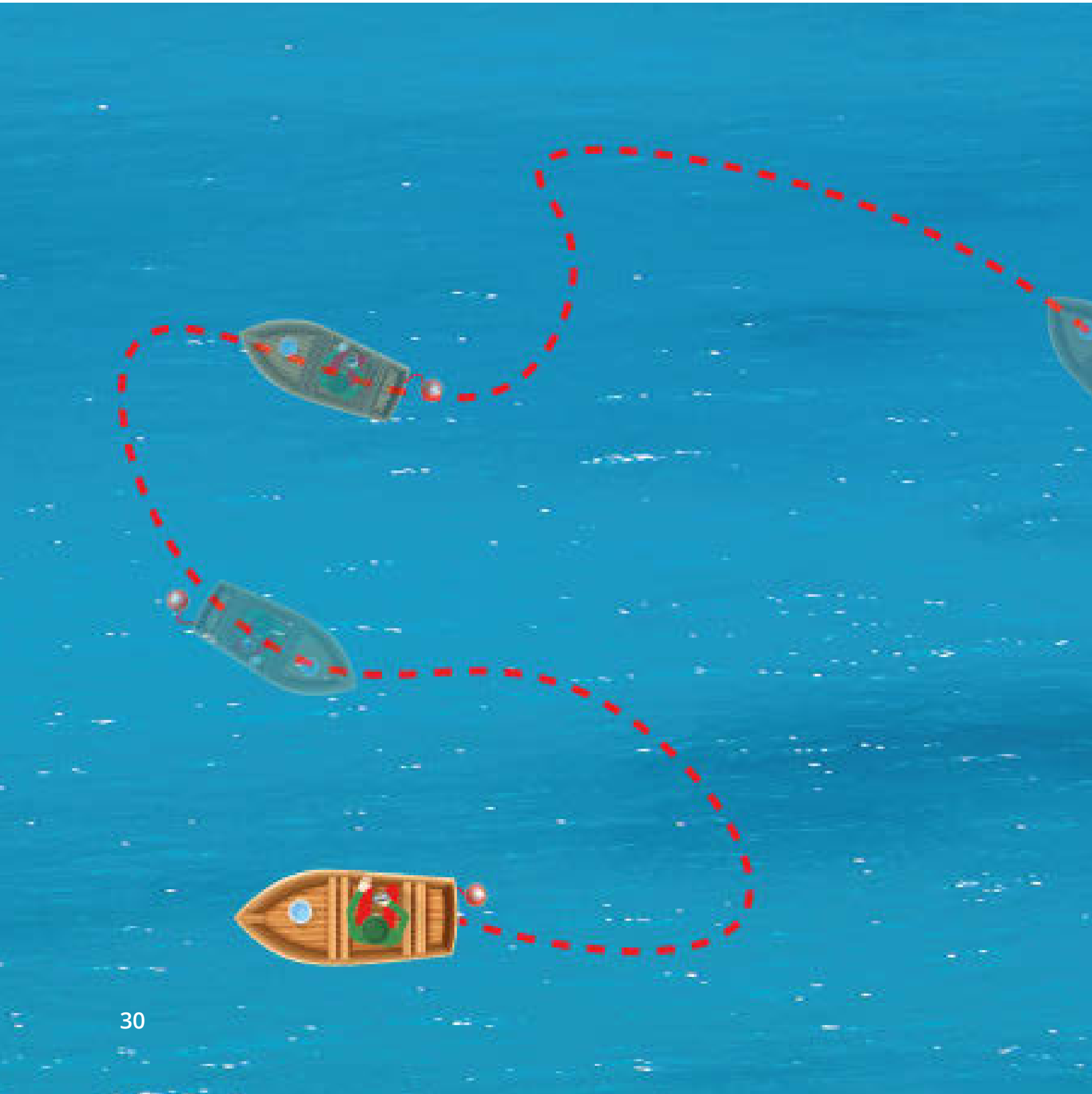
COMBINED VIEW - 3D



3 TRANSDUCER - RAW VIEW

3D FISHING

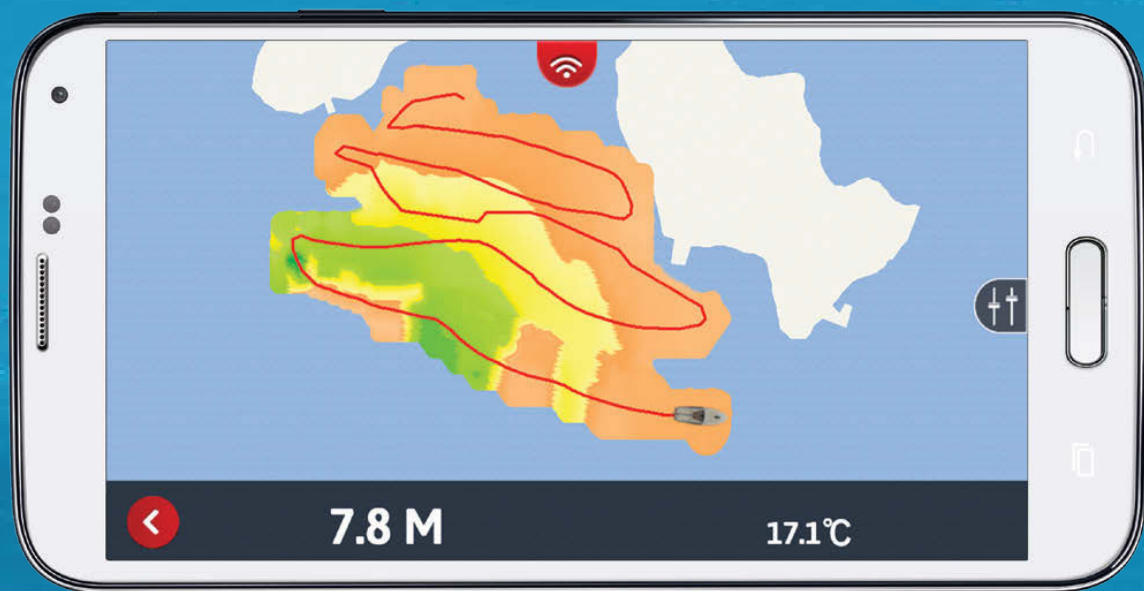
- 1 Place **FishHunter** in water for it to turn on.
- 2 Open your Wi-Fi settings and select **FishHunter XXXX**.
- 3 Open the FishHunter™ app and go into the sonar section.
- 4 Select “**3D FISHING**”.
- 5 Cast/drop **FishHunter** into the water in the area you would like to map.
- 6 You will now start to receive **3D FISHING** data to your device screen.



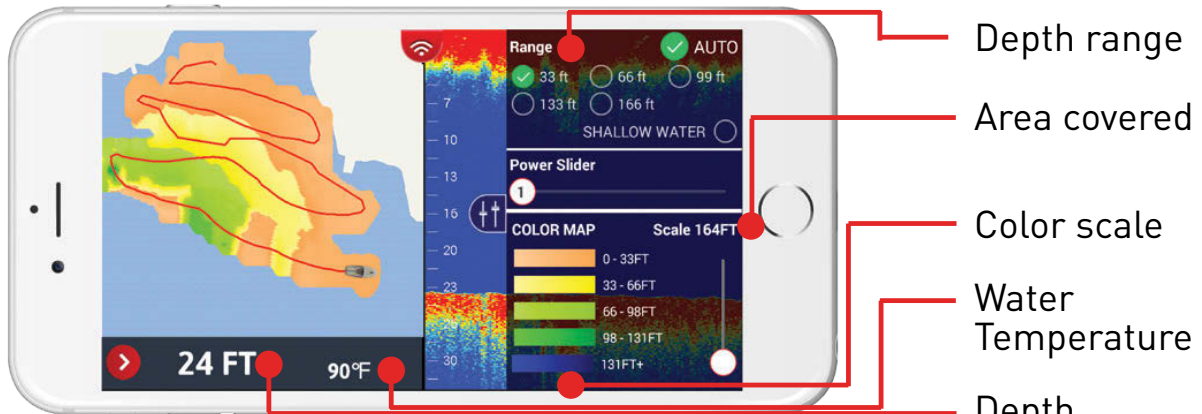
BATHYMETRIC MAPPING

The perfect tool to create a custom map of your entire lake or favourite fishing spots. Just troll your FishHunter™ across the area that you are interested in mapping and FishHunter™ starts to track the depth and bottom contour as it travels around your lake.

Once completed, you can navigate back to any location on your map, or see the bottom contour sonar display by pressing anywhere on your map.

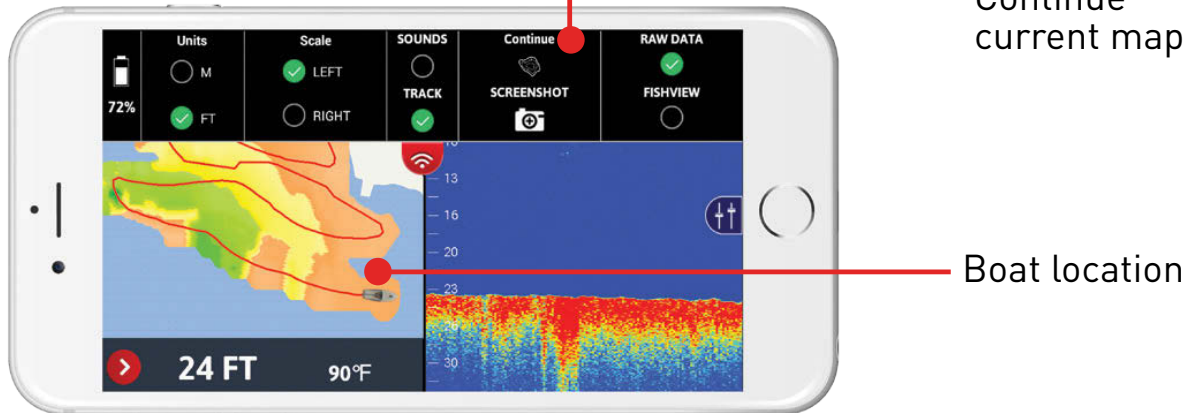


BATHYMETRIC MAPPING



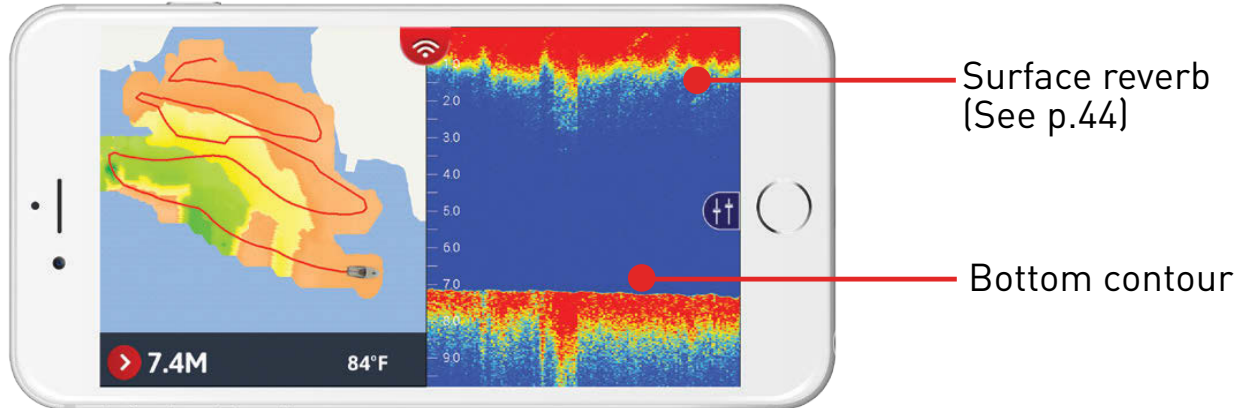
- Depth range
- Area covered
- Color scale
- Water Temperature
- Depth
- Continue current map

SIDE MENU



- Boat location

TOP MENU



- Surface reverb (See p.44)
- Bottom contour

SPLIT VIEW

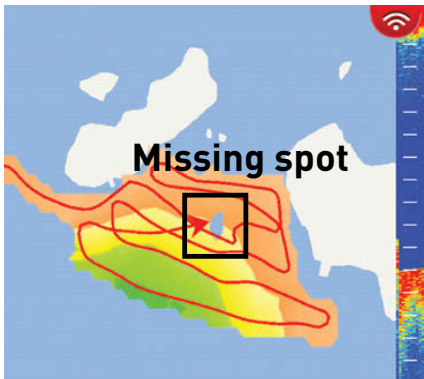
BATHYMETRIC MAPPING STEPS

- 1 Tether your FishHunter to your boat/kayak/canoe and ensure it has good line of sight to your smartphone/tablet.
(We recommend the sonar be directly behind your boat and less than 5ft from your smartphone/tablet.)
- 2 Ensure you are connected to the **FishHunter Wi-Fi** in your settings.
- 3 Open the FishHunter app and go into the **Sonar** section.
- 4 Select **MY BATHYMETRIC MAPS**.
- 5 Select **New Map**.
- 6 The APP will validate your current GPS location and click **Next**.
- 7 The APP will double check the connection to your sonar and click **Next**.
- 8 Click **GO** to start recording your map.
- 9 Your map will automatically save itself while it is recording and can be found in **MY BATHYMETRIC MAPS**.

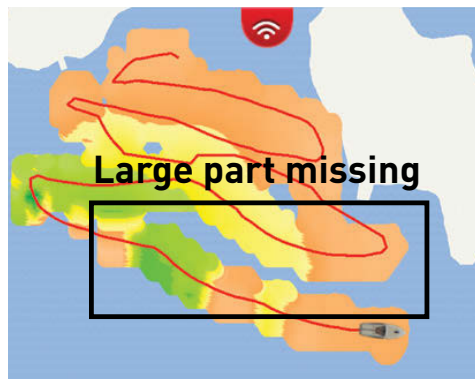
HOW TO ADD TO EXISTING MAP

- 1 Tether your FishHunter to your boat/kayak/canoe and ensure it has good line of sight to your smartphone/tablet.
(We recommend the sonar be directly behind your boat and less than 5ft from your smartphone/tablet)
- 2 Ensure you are connected to the **FishHunter Wi-Fi** in your settings
- 3 Open the FishHunter app and go into the **Sonar** section
- 4 Select **MY BATHYMETRIC MAPS**
- 5 Select the **Map** (from the list) you would like to add to OR choose it from the map view
- 6 Navigate back to the are you wish to continue mapping (Note: you must be within 500m of the last recorded position)
- 7 Open the top menu
- 8 Select **Continue**
- 9 The App will validate your current location and click **Next**
- 10 The App will check the connection to your sonar and click **Next**
- 11 Click **Go** to continue to record your map
- 12 Your map updated map will automatically save itself

MISSING SECTIONS ON MAP?



Missing spot
Data point
was not recorded
by sonar



Large part missing
Area not captured
(Each pass of the boat
was too far apart)



Missing Connection
Sonar and your
device temporarily
lost connection

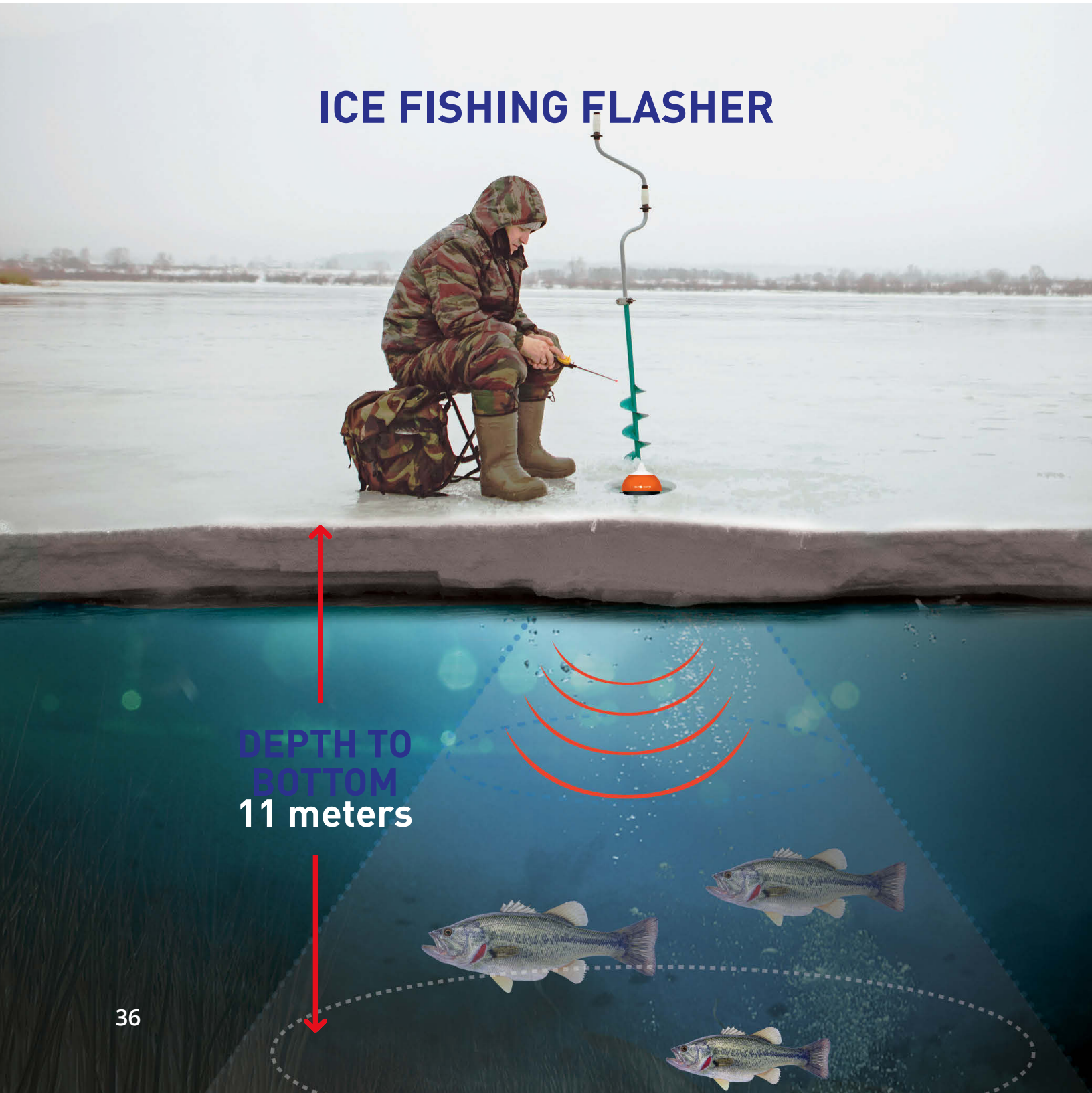
STEPS FOR SOLUTION:

- 1 Navigate to missing spot
(Note: you must be within 500m of the last recorded position)
- 2 Place FishHunter Sonar in water
- 3 Follow steps 1-9 of how to add to existing map
- 4 Troll over area to retrieve missing data

Visit our website for additional support videos:

www.fishhunter.com/support

ICE FISHING FLASHER



DEPTH TO
BOTTOM
11 meters

Unlike traditional flashers that are required to be submerged beneath the ice, **FishHunter** floats in the ice hole on the surface of the water, withstanding weather conditions as cold as $-22\text{ }^{\circ}\text{F}$ ($-30\text{ }^{\circ}\text{C}$).

Ice Fishing Flasher View utilizes 2 powerful ultra high frequencies 475 kHz and 695 KHz, to enable you to see your jig in real time. Both the **SPLIT Screen (Flasher / RAW Data)** and **FULL Screen (RAW DATA only)** views allow you to see the bottom, the bottom depth and the temperature right on your smartphone/tablet.



ICE FISHING FLASHER

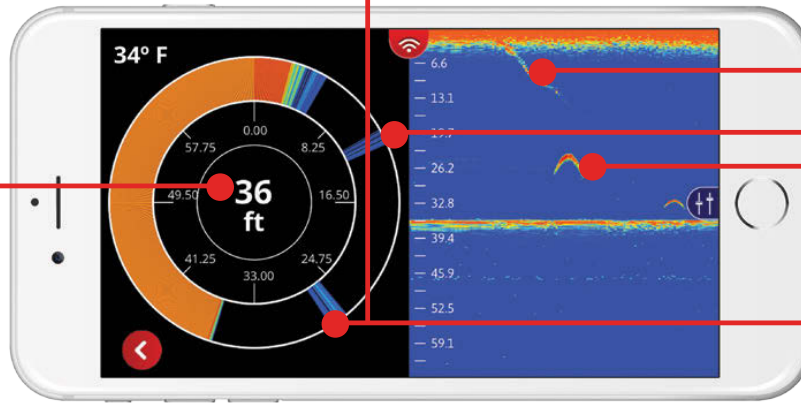
Temperature



Bait and jig line movement

FULL FLASHER MODE

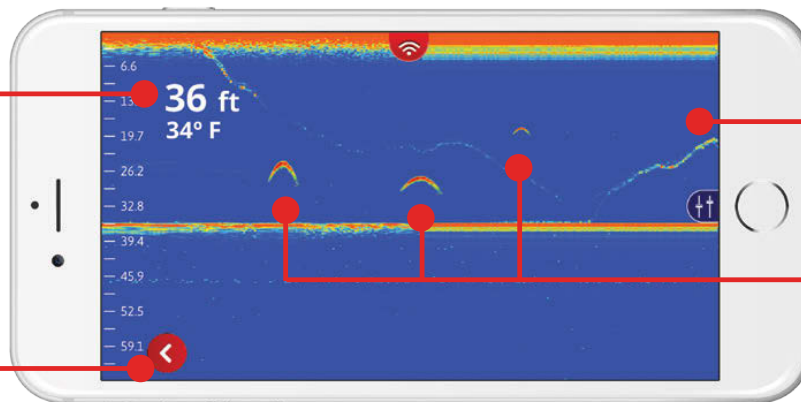
Depth



Fish detected

SPLIT VIEW

Change View



Bait and jig line movement

Fish detected

RAW VIEW

ICE FISHING FLASHER STEPS

- 1 Clear any snow debris from your ice hole.
- 2 Place **FishHunter** in the ice hole to turn it on.
- 3 Open your Wi-Fi settings and select **FishHunter™ XXXX**.
- 4 Open the FishHunter™ app and go into the sonar section.
- 5 Select the **Ice Fishing** icon within the FishHunter™ app from your phone/ tablet screen.
- 6 You will now start receiving **Ice Fishing Flasher** data to your device screen.



SIDE MENU

NOTE:
Surface Filter and Power Slider are very useful when using Ice Fishing Flasher mode. Find more detail about them on page 43 for Surface Filter and on page 46 for Power Slider.

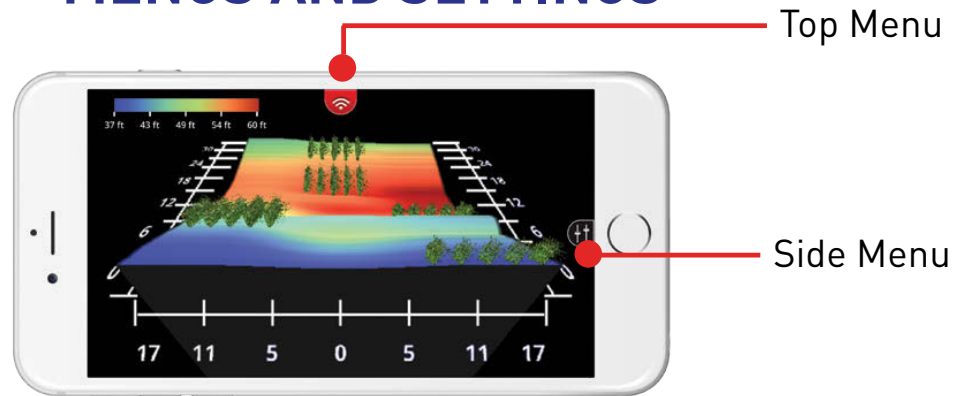
"KNOW WHERE TO DRILL"

The **FishHunter** is very powerful and you can actually find the bottom depth in most cases, without having to drill a hole in through ice.

- 1 Clear the snow from the surface of the ice, ensure ice surface is flat/smooth.
- 2 Plug the charge cord into the bottom of the sonar and remove it. This will turn on your sonar for about 2 minutes.
- 3 Place your **FishHunter** on the top ice surface making sure it is sitting flat on the ice.
- 4 Connect to the **FishHunter** using your Wi-Fi.
- 5 Open the app and select "**Ice Fishing**"

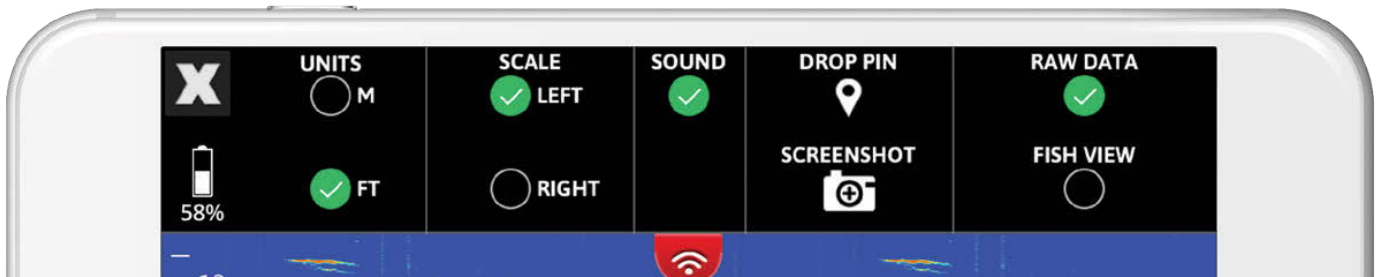


MENUS AND SETTINGS



There is one top menu and one side menu located within your **FishHunter App**. Each of these menus can be called by pressing on the small slider like icon on your screen.

TOP MENU OPTIONS



X: Clicking on this icon will take you back to the view options (for iOS only. For Android, you use the BACK Button)

Battery Life: shows battery charge level of sonar

Unit of Measurement: select the units you wish to display your depth and temperature in (M:metric or FT: imperial)

Scale Location: choose between left or right hand side scales

Sound: ability to turn on and off sound for detecting fish

Drop pin: will create GPS location and save the information to that GPS location. Can later be found on the map area of the app.

Screenshot: will take a screen shot of what's on your screen and save it to your camera roll

Raw View or Fish View: switch between **Raw View** and **Fish View** in some views

SIDE MENU OPTIONS

Shallow Water Mode: will adjust the scale on your screen to be between 1.4ft-15ft and adjust the settings to give you the best results when in less than 15ft of water. Please note that you must adjust the power slider. Failure to adjust the power slider can result in the FishHunter giving you incorrect bottom values.

Auto Range: the screen will take a few seconds to “find the bottom” depth for the area and adjust its settings automatically to balance the gain and pulse width of your sonar to give you the best results.

Every time you cast the **FishHunter** into the water the screen will take a few seconds to “find the bottom” depth for the area that you are fishing in. In order to optimize your experience, we have created an auto ranging function that allows us to

automatically balance the Gain and Pulse Width of your sonar to give you the best possible results at each depth you are fishing in. In most cases leaving it in “Auto” is the best way to use your sonar.

But, if you are taking your **FishHunter** in and out of the water repeatedly, like when casting, we suggest that you try manually setting the depth range to increase the speed of your **FishHunter**. You can set the depth manually by going into the side menu and selecting the depth you will be fishing in. The side menu changes slightly depending on what view you have the sonar in when you open the menu.

Select the number of feet or meters for depth: You can manually select the depth you would like to operate in. This will improve the speed in finding bottom.

Surface Filter Slider/Ice Thickness Slider:

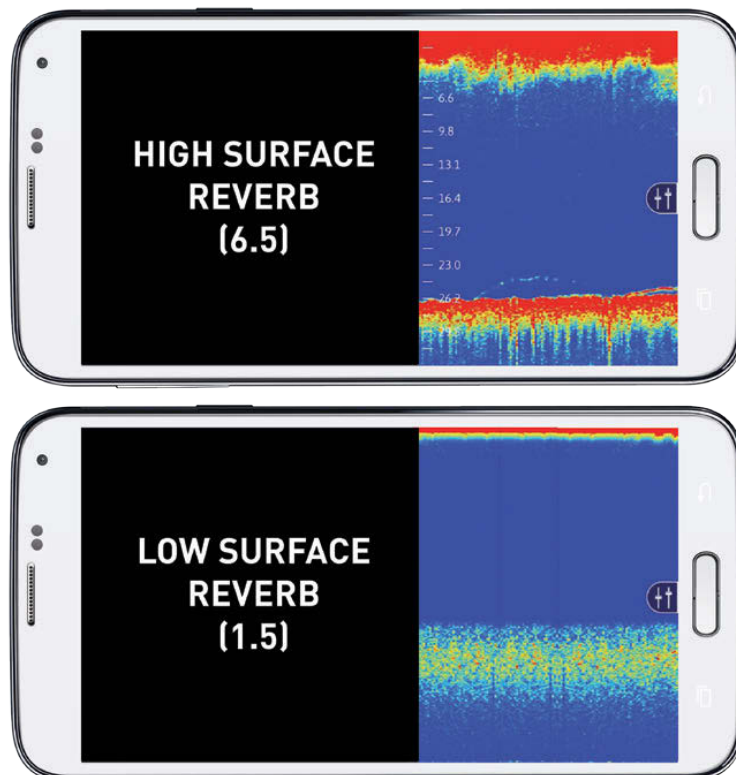
Whenever you use a fish finder, you will get what is called surface reverb or surface noise as the sound waves from the transducer reach the surface of the water.

The Surface Filter allows you to customize how much of the area on the surface you would like your **FishHunter** to ignore or include to give you the most accurate fish detection possible.

The filter is set to the center position by default each time you turn on the sonar, but as you adjust the slider from left to right you will see that a number appears on the right hand side of the

slider. This number (in either imperial or metric) is the ACTUAL amount of the surface that will NOT be measured by your **FishHunter**. In very calm conditions, you can set the Surface Filter to a very low number to allow you to search for fish that are located very close to the surface. In more extreme conditions where you have high wind, high waves or when you are trolling your **FishHunter** behind a boat motor, you will want to turn UP the Surface Filter.

Try to set the Surface Filter to a number that matches where you see the surface noise stop in the RAW data view on your screen. in the example below, you would set the top sonar to 6.5ft and the bottom sonar to 1.5ft to give you the best results.



Fish Sensitivity Slider:

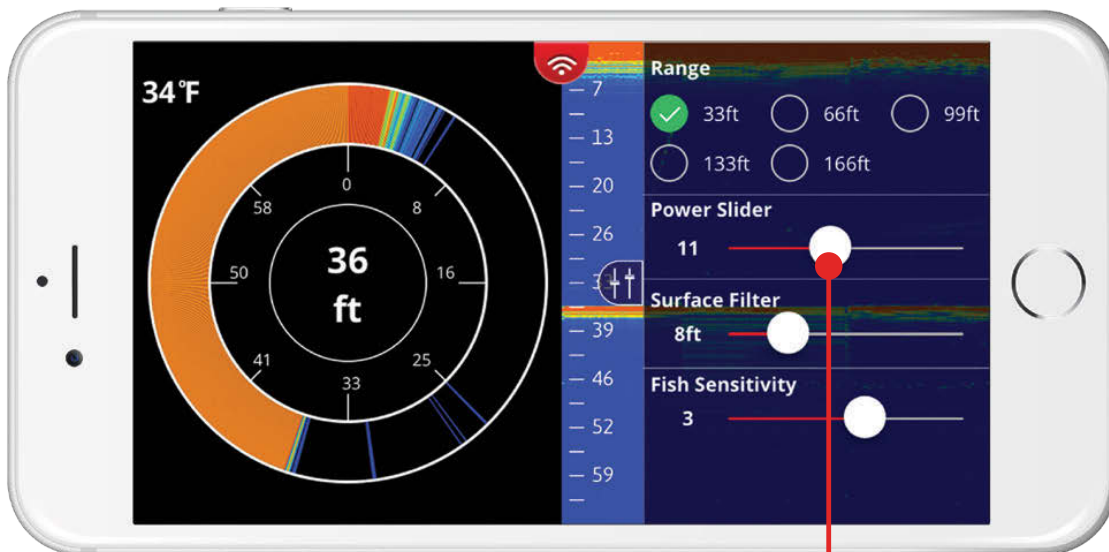
The Fish Sensitivity Slider adjusts how sensitive the **FishHunter** is at detecting fish in the water column/body. As you move the slider from left to right you can increase the sensitivity of your **FishHunter** from 0 to 5, with 5 being the most sensitive. The Fish Sensitivity Slider can be changed in real time, so you can see the direct impact each position change has on having the **FishHunter** display and notify you of fish that have been found in FISH VIEW. Sometimes, you will want the **FishHunter** to detect and display all the fish no matter how small they are, and other times you will want the **FishHunter** to detect and display only large fish. The Slider provides you a means to customize the **FishHunter** to your fishing preference.



Fish Sensitivity Slider

Power Slider:

The Power Slider allows you to adjust the gain and pulsewidth for your **FishHunter**. In Ice Fishing Flasher mode, the **FishHunter** does not know the thickness of the ice, giving you the ability to adjust the power you want to use when ice fishing. Higher power will allow you to see your jig very clearly but lead to more surface reverb, while less power will lead to minimal surface reverb but less clarity on tracking your jig. We expect that you will need to adjust this setting each time you use your **FishHunter** in a new area.



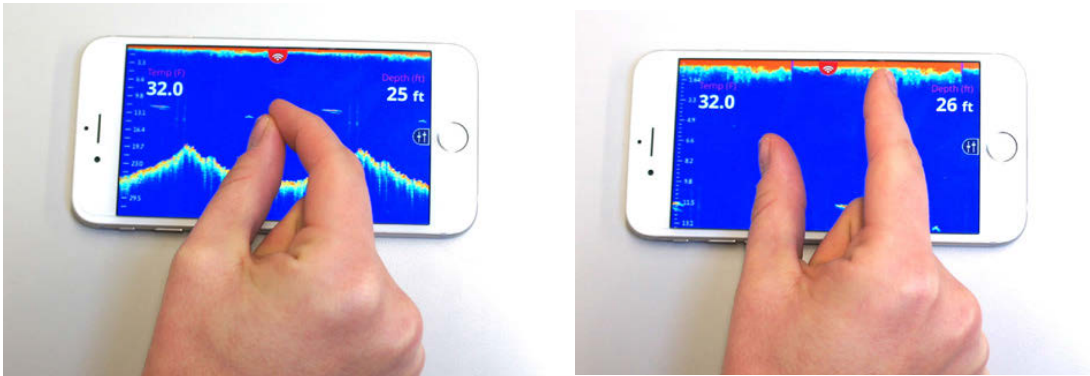
Power Slider

ZOOM FEATURES

This feature within the FishHunter app allows you to look more closely at the sonar display on your phone. This is useful when you want to look at the bottom area OR review the top area of the sonar data to look for fish or other specific artifacts. This feature can be used anytime you are in the sonar portion of the app, and reviewing RAW sonar data.

Steps:

1. Review sonar in RAW data view.
2. “Pinch” your fingers together and place on the screen where you want to zoom.
3. Slowly move fingers apart while touching the screen.
4. Adjust the screen to the place on the screen that you would like to focus on by taking your finger and “scroll” the screen to move the screen up and down to get to the correct position.



Note: that when you are Zooming IN/OUT, the scale on the right/left side in the sonar reading section will also change to match the Zoom level you have chosen. As you are zoom in the scale will increase and as you zoom out it will decrease.

IMPORTANT USAGE TIPS

FishHunter is the World's most powerful portable fish finder and it is designed to work in all types of fishing conditions. As you already know, it comes with 5 very powerful views to support you in catching more fish and we recommend that you review how the 5 different views work on our web site:

www.fishhunter.com/directional3d

1 Casting and reeling from shore:

The **FishHunter** is 180 grams, so when casting from shore we recommend that you use a stiff rod and braided line. We have tested casting the unit with all types and styles of rods and lines and have had no issues, but better to be safe in your approach when casting from shore.

2 Kayak Fishing Usage:

With a range of over 150 ft, you can cast the **FishHunter** away from the kayak and fish the broadest possible area. We have tested casting the unit on all types of rods and lines but do suggest a braided line for casting.

Drifting:

For drifting we recommend that you use our 15 ft leash to attach your **FishHunter** to the back/side of your kayak. As you drift along, the **FishHunter** will be giving you a strong reading for the area located around the floating sonar and below your kayak. This is perfect when you are not looking to cast your line far or when you would like to drift your bait line.

Bathymetric Mapping:

Ensure your FishHunter is attached to your kayak within 5 ft of your device. Ensure your device is elevated (try our fishing tripod) and has good visibility to the sonar.

Paddling/Pedaling:

When paddling/pedaling the kayak at a slow pace you can use the 15 ft leash and pull the **FishHunter** behind the kayak to allow you to see the terrain below your kayak.

When paddling/pedaling along at a fast pace, you will want to have the **FishHunter** located just behind your seat in the kayak. This will give you the best possible connection with the sonar and the most consistent screen speed. (See photos on the next page.)

I. Attach your tether to the side of your kayak
(Note: in the below we have attached it to the kayak handle).

II. Allow enough line to ensure your **FishHunter** will be behind your seat. When you are moving along (in this case we have used about 4 ft of the tether) the **FishHunter** may bounce off the side of your kayak from time to time, but that will not impact its performance.

You may notice in the **RAW VIEW** that you will be able to see your paddle/pedal strokes in the surface noise. This does not impact the performance of your sonar and is due to the fact that the sonar is floating directly behind your kayak.



You can eliminate this by either moving the **FishHunter** just behind your seat as explained above, OR you can switch to **FISH VIEW** and use the surface slider to adjust to eliminate the area where your paddle/pedaling is appearing.

3 **Tin/Metal Boat Fishing:**

When reeling into the boat you will notice that in some cases as the **FishHunter** gets close to the boat (under 5 ft) you will start to see the boat in the RAW data or views screens. This is due to the power of the transducers that we are using and their reflection off the side of your boat. When the unit is right beside the boat most of this reflection will disappear.

Drifting (no motor running):

For drifting we recommend that you use our 15 ft leash to attach your **FishHunter** to the top/side of your boat. This will allow you to have both hands free to focus on fishing. As you drift along, the **FishHunter** will be giving you a strong reading for the area around the floating sonar and your boat. This is perfect when you want to fish close to your boat.

With a range of over 150 ft, you can also attach the **FishHunter** to a fishing rod and then cast it into the area that you would like to drift it across. This will allow you to fish a much broader area and also allow you to cast directly at your **FishHunter**.

Trolling- 15 ft Leash Mounting:

The **FishHunter** has been designed to troll at under 2 miles per hour for Android and under 1.5 miles per hour for iOS devices.

The difference in the two devices is due to the difference in the Wi-Fi chips in the different devices. You will find several cases where you can troll faster but this is our recommended range. Trolling speed is impacted by the water conditions and wave heights. In more rough water the **FishHunter** will perform slightly better than perfectly calm water. We recommend that you use the 15 ft leash that is provided with your **FishHunter** to make it easy for you to use your new sonar.

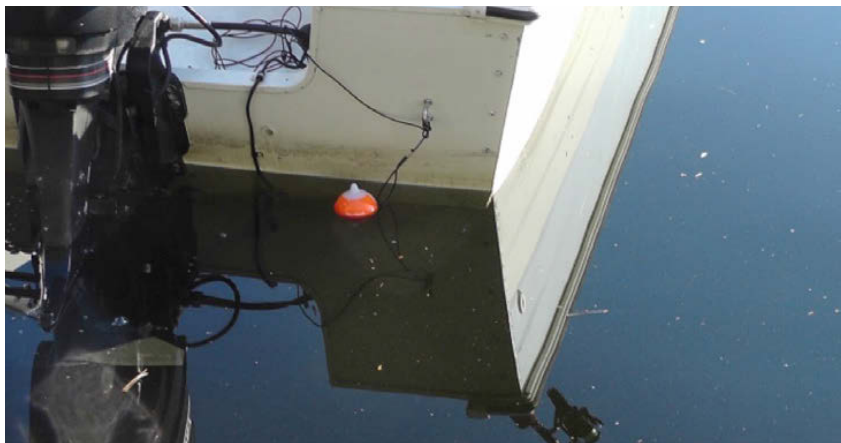
Please note - when trolling the **FishHunter** in a metal boat you may see a thin line on your screen, this is just a sound reflection off of your metal boat. - might think that reflection is a fish. When this happens, you will see fish continuously on the screen at the same depth level. Since this situation only occurs with certain boats and not all, we suggest that you use the "Fish Sensitivity Slider" to adjust the sensitivity of the fish finding algorithm we use to present/notify you of fish in the water.

You will find the "Fish Sensitivity" slider in the side menu, within the sonar section of the app. Please move the slider to the left to eliminate **FishHunter** from seeing your boat as fish.

Trolling –Transom Mounting:

If you are having trouble with the connection to your phone or tablet when trolling using your leash or you would like to try to troll the **FishHunter** at a faster rate, you can attach the unit to the back of the trailer mount of your fishing boat. Please follow the steps below:

- You are going to be attaching the **FishHunter** to the trailer mounting bracket on the back of your boat.
- You will want the **FishHunter** to be about 6-10 inches behind the back of the boat when you are finished, so it will float freely in the water. The actual length required will depend on the height of your trailer mounting bracket. A higher bracket means you will need slightly more line.
- The goal here is to have the **FishHunter** sitting flat on the water with about 6 inches of line free after it is attached to boat. This will allow the **FishHunter** to sit flat in the water while you are trolling it.



You can watch "Making a Boat Mount" video at:
www.fishhunter.com/support

WARRANTY

Navico warrants that its products, when properly installed and used, will be free from defects in material and workmanship for the period stated for the applicable product and/or peripheral device as set out on **www.lowrance.com** from the date of first purchase (the Warranty Period).

For the purpose of this Warranty, 'date of first purchase' means the date the product was purchased by the first retail customer; or in the case of a product installed on a new vessel by a Certified/Approved Navico Boat Builder, the date the first retail customer took delivery of the vessel.

Navico will, at its sole discretion, repair or replace with new or refurbished parts or product, or equivalent product, any proven defective products or components returned to Navico, or its approved agent during the Warranty Period in accordance with the terms, conditions and limitations as set out on **www.lowrance.com**. Such repairs or replacements will be the sole remedy of the customer under this Warranty.

This warranty gives you specific legal rights, your rights may vary from jurisdiction to jurisdiction. These rights exist alongside all rights you have under local law.

OBTAINING WARRANTY SUPPORT

Customers can obtain warranty support by contacting:

- Their local Navico Certified/Approved Dealer or Distributor (a list of Certified/Approved Dealers and Distributors can be found on **www.lowrance.com**)
- Navico, Americas on 1 800 628 4487
- Navico, Australia on 1 300 628 426
- Navico, Europe, Middle East & Africa - for a list of Certified Dealers and Distributors by country refer to **www.lowrance.com**.

HOW LONG DOES THE COVERAGE LAST?

Our warranty periods are 1 year from the documented date of purchase.

FishHunter™ 3D Includes :

- FishHunter 3D Sonar
- USB Charging Cord
- 15ft leash



FishHunter Inc.
Worldwide Offices
www.fishhunter.com/support